

8ος Διαγωνισμός Πρωτοπόρων Εκπαιδευτικών της Microsoft

Συμμετέχουμε ως «Ψηφιακή Τάξη» στον **8ο Διαγωνισμό Πρωτοπόρων Εκπαιδευτικών** της **Microsoft**. Η εκπαιδευτική δραστηριότητα που συμμετέχει στον διαγωνισμό και θα έχει τα περισσότερα likes μέχρι τις 31 Ιανουαρίου 2013 θα κερδίσει αυτόματα το βραβείο Educators Choice και οι εκπαιδευτικοί θα έχουν τη δυνατότητα να παρουσιάσουν τη δουλειά τους στο Φόρουμ Συνεργάτες στη Μάθηση τον Μάρτιο.

Η υποψηφιότητά μας έχει τίτλο:

«PowerPoint - εργαλείο ιδεών» ή στα αγγλικά "PowerPoint - Tool Ideas"

Οδηγίες

Κάντε κλικ στον παρακάτω σύνδεσμο.

<http://www.pil-network.com/Resources/LearningActivities/Details/bb7e71e0-1388-4a51-a954-16d2f4f78e3c>

Θα εμφανιστεί η παρακάτω σελίδα:

Κάντε κλικ στο "Join" ή στο "Sign in" στην πάνω δεξιά γωνία της σελίδας.

Select language ▼

Microsoft® Partners in Learning

resources hot topics community professional development for schools about

RESOURCES

Learning Activities

Share your ideas!
Submit a learning activity.
[get started >](#)



Related keywords

microsoft onenote >

microsoft powerpoint >

microsoft word >

skype >

windows 7 >

articulate storyline >

articulate studio >

ispring suite >

slideboom >

weebly >

ages 11 - 13 >

ages 8 - 10 >

digital/media lit...

geography >

history >

language arts and...

mathematics (all) >

natural sciences >

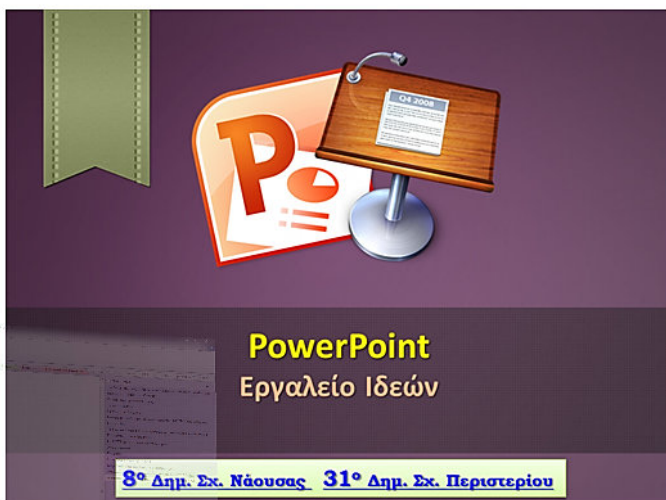
Silver level

PowerPoint- Tool Ideas

Uploaded on 9/1/2013

Like 351

Share



Θα εμφανιστεί η παρακάτω σελίδα:

Κάντε κλικ σε ένα από τα κυκλωμένα, στο facebook, στο Google (Gmail) ή στο Yahoo.

Select language ▼

Microsoft® Partners in Learning

resources hot topics community professional development for schools about



Discover the benefits of being a member

- Access FREE software and tools to...
- View...
- Θα εμφανιστεί ένα από τα κυκλωμένα, το facebook, το Google (Gmail) ή το Yahoo, ανάλογα εκείνη τη στιγμή που θα μπειτε με ποιο είστε συνδεδεμένοι. Αν δεν είστε συνδεδεμένοι πουθενά, θα εμφανιστούν όλα, όπως εδώ.

Sign in

Use your Windows Live ID account to sign in.

 Windows Live ID

Don't have a Windows Live ID? [Create one](#)

Use the same Windows Live ID to sign in to the Partners in Learning Network Hotmail, Messenger, Xbox LIVE and other Microsoft services.

Or, sign in using:

 facebook

 Google

 YAHOO!



MY PROFILE
My profile
Edit profile

COMMUNITY
Discussions
Find a member
Find an organization



RESOURCES
Free tools
Tutorials
Learning activities

PROFESSIONAL DEVELOPMENT
Earn badges
Windows in the Classroom Seminar
Teaching with Technology

FOR SCHOOLS
Partners in Learning for Schools

ABOUT
For teachers

CONTACT US
Contact us
Feedback
Report abuse
Microsoft in education

CONNECT
 



© 2013 Microsoft [Privacy statement](#) [Terms of use](#) [Trademarks](#)

Μπορεί να σας ζητηθεί να γράψετε τον κωδικό σας, όπως στο παράδειγμα παρακάτω:

YAHOO!

Hi,  [Sign Out](#) | [Help](#)

mzpiln.accesscontrol.windows.net

Sign in to
mzpiln.accesscontrol.windows.net
with your Yahoo! ID

Please verify your password



Are you protected?
Create your sign-in seal.
(Why?)

Yahoo! ID

Password:

[Sign In](#)

[I can't access my account](#)

Not papa_giota?

[Sign in as a different user.](#)


Copyright © 2013 Yahoo! Inc. All rights reserved.
[Copyright/IP Policy](#) | [Terms of Service](#) | [Guide to Online Security](#) | [Privacy Policy](#)

Η υπηρεσία θα σας ζητήσει επιβεβαίωση για να συνδεθεί με τη Microsoft. Προχωρήστε πατώντας το σύνδεσμο "Agree" ή "Συμφωνώ" στο Yahoo (παράδειγμα) ή οτιδήποτε σχετικό στα άλλα.

YAHOO! Hi, Giota ▾ Sign Out Help

Click "Agree" to sign in to mspiln.accesscontrol.windows.net using your Yahoo! ID and allow sharing of Yahoo! info.

You are sharing the following:

 [redacted]@yahoo.com


Agree

By clicking Agree you are agreeing to the Yahoo! [Additional Terms of Service](#) and Yahoo!'s sharing of the types of account info listed above on return visits.

Copyright © 2013 Yahoo! Inc. All rights reserved.
[Copyright/IP Policy](#) | [Terms of Service](#) | [Guide to Online Security](#) | [Privacy Policy \(Updated\)](#)

Θα εμφανιστεί η παρακάτω σελίδα:

Εδώ πρέπει να δημιουργήσετε ένα προφίλ. Συμπληρώνετε μόνο τα στοιχεία που έχουν δίπλα κόκκινο αστερίσκο (*) - δείτε στην επόμενη σελίδα.

Select language ▾ Create your profile 

Microsoft Partners in Learning

Create profile - Partners in Learning Network

Basic information

* indicates required field

*

*

*

E-mail address when communicating with the Partners in Learning Network. Will not change sign-in credentials. Will not be shared or displayed.

Select your role *(check all that apply)

☐ I am directly responsible for teaching students

☐ I am a para-professional or work with special needs students

☐ I am the computer/technology coordinator at my school

☐ I am involved in curriculum development

☐ I am a school leader or administrator

☐ I am a higher education faculty member

☐ I am a Dean in a higher education institution

☐ I am a student enrolled in a college of education or a pre-service teacher

☐ I am a government leader or set education policy at a local, regional or country level

☐ I am an education trainer

☐ I am a chief information officer or set policy and make decisions about the technology infrastructure schools in my area use

☐ Other

Personal experiences

My lessons, assessments and opportunities are now richer, more connected and social. As a result, my students are more interested and motivated to do their best.

Melanie Wiscourt, Palmyra, PA, USA

"We aren't just teaching students specific skills – we are strengthening their capacity to be lifelong learners."

Gayle Purdue, Palmerston, Northern Territory (2011 Partners in Learning Teacher Award Winner)

Through Partners in



Create profile - Partners in Learning Network

Basic information

* indicates required field

*
 *
 *
E-mail address when communicating with the Partners in Learning Network. Will not change sign-in credentials. Will not be shared or displayed.

Select your role * (check all that apply)

☐ I am directly responsible for teaching students
☐ I am a para-professional or work with special needs students
☐ I am the computer/technology coordinator at my school
☐ I am involved in curriculum development
☐ I am a school leader or administrator
☐ I am a higher education faculty member
☐ I am a Dean in a higher education institution
☐ I am a student enrolled in a college of education or a pre-service teacher
☐ I am a government leader or set education policy at a local, regional or country level
☐ I am an education trainer
☐ I am a chief information officer or set policy and make decisions about the technology infrastructure schools in my area use
☒ Other

Set profile picture

*
 *
 *
 *

My native language is

*

 I am also fluent in

[Add more](#)

☐ I would like to receive additional information and offers from Microsoft Education and its partners.
[Privacy Statement](#)

Το όνομά σας ή το ψευδώνυμό σας θα εμφανιστεί. Μπορείτε να αλλάξετε το όνομά σας και να βάλετε ό,τι θέλετε

γράφετε το email σας

τσεκάρτε ένα από τα κουτάκια



Personal experiences

My lessons, assessments and opportunities are now richer, more connected and social. As a result, my students are more interested and motivated to do their best.

Melanie Wiscount,
Palmyra, PA, USA

"We aren't just teaching students specific skills – we are strengthening their capacity to be lifelong learners."

Gayle Purdue,
Palmerston, Northern Territory (2011 Partners in Learning Teacher Award Winner)

Through Partners in

Through Partners in Learning, I have grown both personally and professionally. I've developed lifelong relationships and a priceless perspective into global education.

John Andrew Klisko,
Wolforth, TX USA

επιλέξτε χώρα

γράψτε μια πόλη

επιλέξτε ζώνη ώρας

Πατήστε "save"

Θα εμφανιστεί το παρακάτω μήνυμα. Πατήστε "maybe later".

Select language ▼

Giota Papa

Microsoft Partners in Learning

Edit profile

Basic information

* indicates required field

Giota *

Papa *

papa_giota@yahoo.com *

E-mail address when communicating with the Learning Network. Will not change sign-in credentials. Will not be shared or displayed.

Professional title

Select your role * (check all that apply)

- ☐ I am directly responsible for teaching students
- ☐ I am a para-professional or work with special needs students
- ☐ I am the computer/technology coordinator at my school
- ☐ I am involved in curriculum development
- ☐ I am a school leader or administrator
- ☐ I am a higher education faculty member
- ☐ I am a Dean in a higher education institution
- ☐ I am a student enrolled in a college of education or a pre-service teacher
- ☐ I am a government leader or set education policy at a local, regional or country level
- ☐ I am an education trainer
- ☐ I am a chief information officer or set policy and make decisions about the technology infrastructure in my area

Create profile

Congratulations.

Your profile has been saved. Would you like to add additional details?

yes maybe later >

Personal experiences

My lessons, assessments and opportunities are now richer, more connected and social. As a result, my students are more interested and motivated to do their best.

Melanie Wiscourt
Palmira, PA, USA

"We aren't just teaching students specific skills – we are strengthening their capacity to be lifelong learners."

Gayle Purdue,
Palmerston, Northern Territory (2011 Partners in Learning Teacher Award Winner)

Θα εμφανιστεί η σελίδα που μπήκατε στην αρχή. Πατήστε ένα like και τελειώσατε.

Select language ▼

Join | Sign in

Microsoft Partners in Learning

resources hot topics community professional development for schools about

Learning Activities

Share your ideas!
Submit a learning activity.
[get started >](#)

Related keywords

- microsoft onenote >
- microsoft powerpoint >
- microsoft word >
- skype >
- windows 7 >
- articulate storyline >
- articulate studio >
- ispring suite >
- slideboom >
- weebly >
- ages 11 - 13 >
- ages 8 - 10 >
- digital/media lit... >
- geography >
- history >
- language arts and... >
- mathematics (all) >

Silver level

PowerPoint- Tool Ideas

Uploaded on 9/1/2013

Like 355

Share

PowerPoint
Εργαλείο Ιδεών

8° Δημ. Σχ. Νάουσας 31° Δημ. Σχ. Περιστερίου